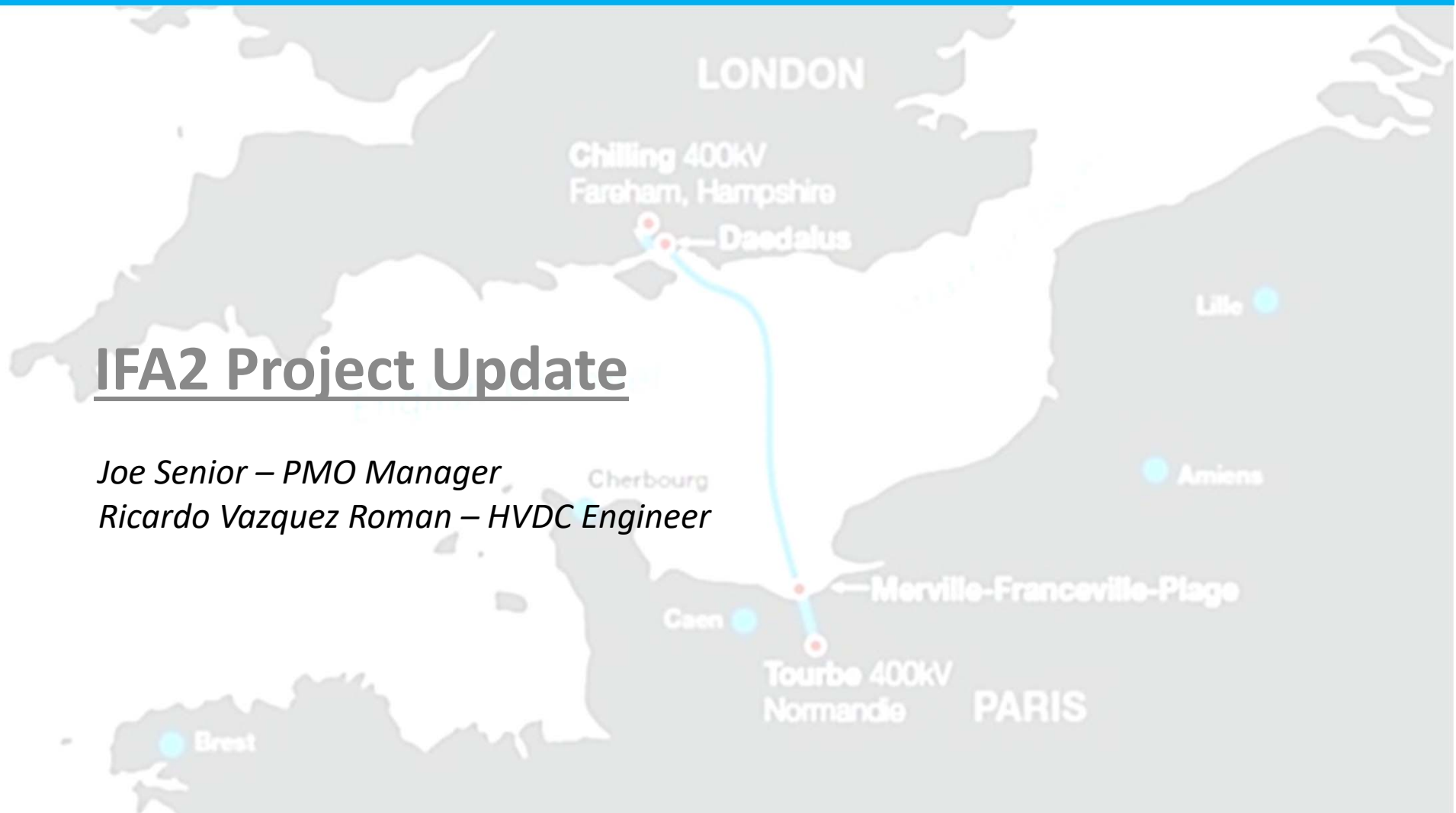


IFA2

IFA2 Project Update

Joe Senior – PMO Manager

Ricardo Vazquez Roman – HVDC Engineer



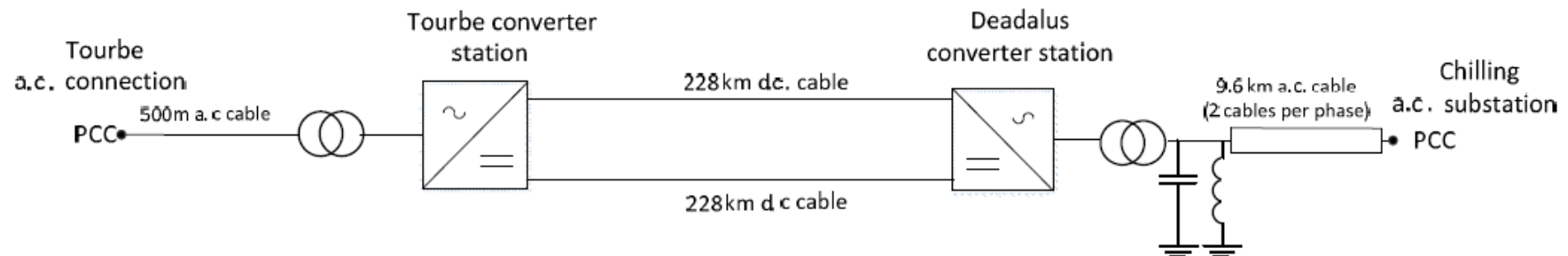
- What is IFA2
- Project Update
- Stakeholder Engagement
 - Converter Station
 - Airfield
 - Offshore Works
- Key Learnings

IFA2

What is IFA2?



- 1000MW
- VSC Symmetrical monopole
- +/-320kV XLPE
- 235km DC
 - 208km offshore
 - 25km onshore [FR]
 - 2km onshore [GB]
- 10km AC [GB]
 - 6km offshore
 - 4km onshore
- EPC Contracts awarded April 2017
- Operational 2020





UK Converter station (Daedalus) - Aerial View



FR converter station (Tourbe) - Aerial View



Offshore Campaigns began in 2019. Cables loaded on the Cable Enterprise in Pikkala, Finland.



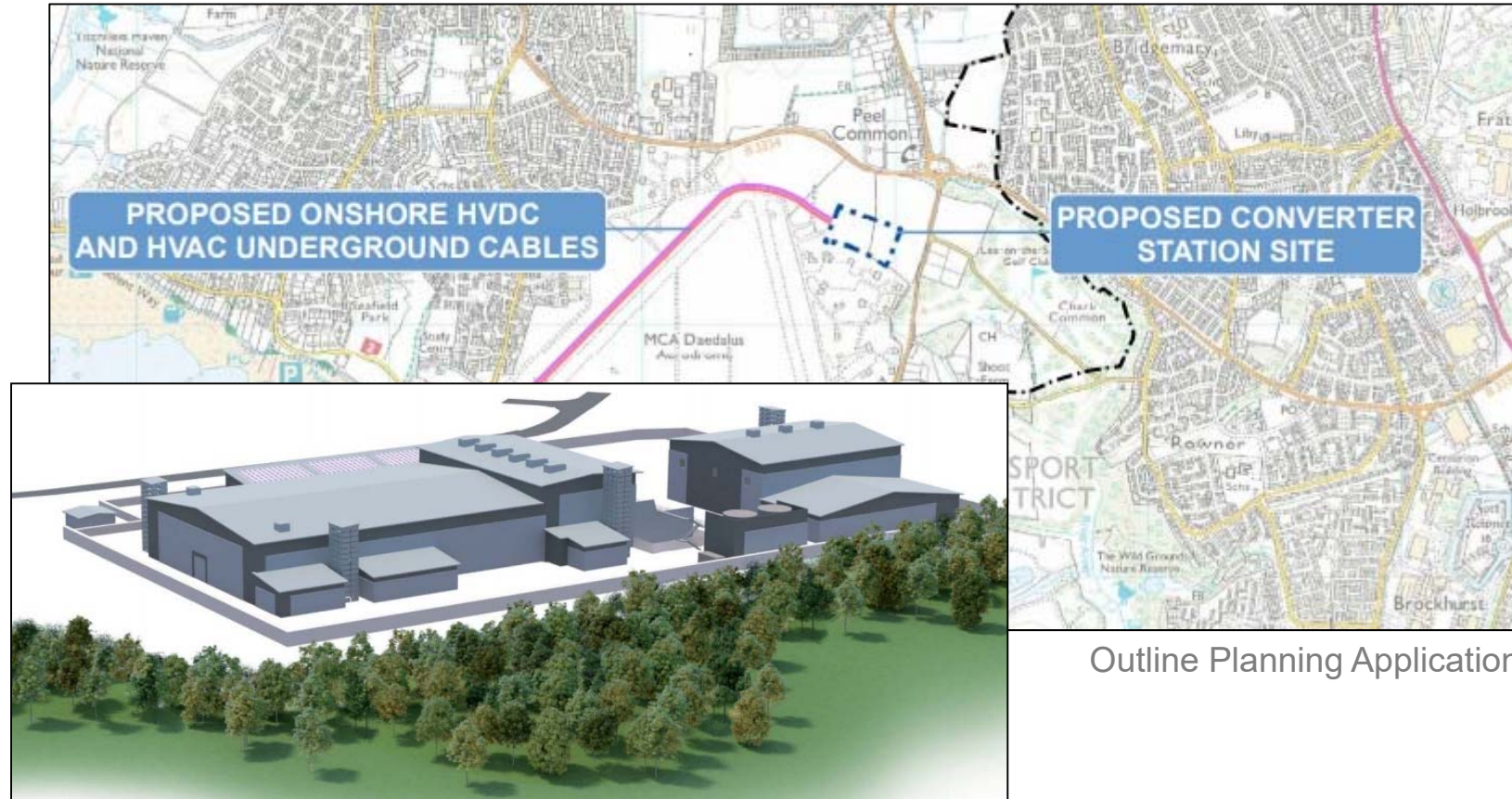
Wing of a complete Fairey Barracuda Aircraft (1943) discovered on the Cable Route.



UK Onshore Cables Civil works complete. Progressing into Cable pull and jointing.



UK Landfall works in preparation for AC and DC Cable installation.



Outline Planning Application

Daedalus Converter – Reserved Matters Application

IFA2

Stakeholders - Location



IFA2

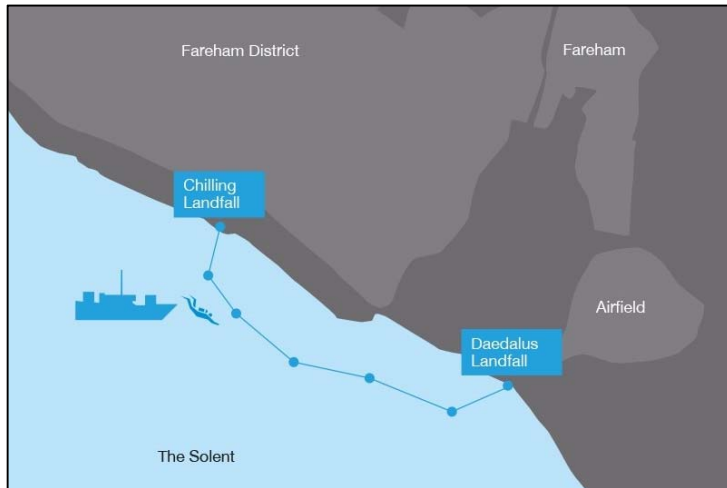
Stakeholders - Airfield



IFA2

Stakeholders - Airfield





1. Proactive with communications
2. Identify and acknowledge Stakeholder concerns and demonstrate that you have taken them into consideration where possible.
3. Build up relations to a point where those objecting to the project can work with you to mitigate and minimise the impact.

